

**SVEN**®

PC Gamepad

## **OPERATION MANUAL**



**GC-5070**

[www.sven.fi](http://www.sven.fi)

***Congratulations on the purchase of Sven gamepad!***

Please read this Operation Manual before using the unit and retain this Operation Manual in safe place for future reference.

**COPYRIGHT**

© 2018. SVEN PTE. LTD. Version 1.0 (V 1.0).

This Manual and information contained in it are copyrighted. All rights reserved.

**TRADEMARKS**

All trademarks are the property of their legal holders.

**NOTICE OF RESPONSIBILITY RESTRICTION**

Despite the exerted efforts to make this Manual more exact, some discrepancies may occur. The information of this Manual is given on "as is" terms. The author and the publisher do not bear any liability to a person or an organization for loss or damages which have arisen from the information, contained in the given Manual.

**BUYER RECOMMENDATIONS**

- Unpack the device carefully. Make sure there are no accessories left in the box. Check up the device for damage; if the product was damaged during transportation, address the firm which carried out the delivery; if the product functions incorrectly, address the dealer at once.
- Shipping and transportation equipment is permitted only in the original container.
- Does not require special conditions for realization.
- Dispose of in accordance with regulations for the disposal of household and computer equipment.

**CONTENTS**

<b>1. DESCRIPTION .....</b>	<b>3</b>
<b>2. SAFETY PRECAUTIONS .....</b>	<b>3</b>
<b>3. PACKAGE CONTENTS .....</b>	<b>3</b>
<b>4. SPECIAL FEATURES .....</b>	<b>3</b>
<b>5. SYSTEM REQUIREMENTS .....</b>	<b>3</b>
<b>6. DESCRIPTION OF THE CONSTRUCTION .....</b>	<b>4</b>
<b>7. CONNECTION AND INSTALLATION .....</b>	<b>5</b>
<b>8. TROUBLESHOOTING .....</b>	<b>7</b>

*Technical support is on [www.sven.fi](http://www.sven.fi).*

## 1. DESCRIPTION

GC-5070 wireless gamepad can be used in different games such as simulators, arcades, shooter games etc. Vibration feedback imparts a feeling of realistic experience during games. Rubber coating and ergonomic construction of GC-5070 enhance accuracy of its operation during games.

## 2. SAFETY PRECAUTIONS

- Do not disassemble or repair the device on your own. Maintenance and repairs should be carried out by qualified service centre staff only.
- Protect the device from direct impact of high humidity, dust, strong magnetic fields, vibrations, high temperatures, toxic liquids and gases.
- Instructions for device maintenance: for cleaning the case of the device please use clean soft cloth. Do not use such solvents as gasoline or spirit for cleaning, since these solvents can damage the surface of the device.
- Do not drop the device to avoid damaging it.

## 3. PACKAGE CONTENTS

- Gamepad — 1 pc
- 2.4GHz USB Nano-Receiver — 1 pc
- Power cable USB to micro USB — 1 pc
- Operation Manual — 1 pc
- Warranty card — 1 pc

## 4. SPECIAL FEATURES

- Ergonomic design of the gamepad
- Supports: Windows 7/8/10, PS3, Android\*
- USB Interface
- Turbo function for continuous firing
- Soft-touch cover for confident control while playing
- Built-in battery
- 4 axes, D-Pad, 2 mini joysticks and 11 buttons
- 2 touchable buttons with feedback
- Digital and analog modes available
- Decorative lighting

## 5. SYSTEM REQUIREMENTS

- USB port available
- Windows 7/8/10, PS3, Android\* Operational System

\* There may be incompatibility with individual versions of Android and models of Android-devices.

**6. DESCRIPTION OF CONSTRUCTION**

- ① D-Pad
- ② Left joystick
- ③ Touch buttons
- ④ Button HOME with built-in operating modes indicator
- ⑤ Buttons 1-4
- ⑥ Right joystick
- ⑦ Button RT
- ⑧ Button RB
- ⑨ Connector for charging
- ⑩ Button LT
- ⑪ Button LB
- ⑫ Button RESET
- ⑬ USB nano-receiver

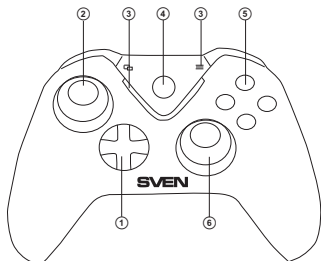


Fig. 1. Top view

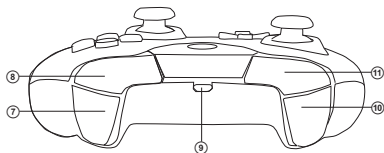


Fig. 2. Front view

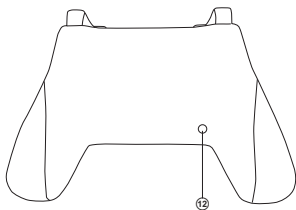


Fig. 3. Bottom view



Fig. 4. USB nano-receiver



• To check and configure in DirectInput mode, select Properties in the Game Devices window, and the Properties: USB Vibration Joystick (BM) window pops up. In the «Function Test» tab, you can check the execution of commands when you press the buttons and rotate the joysticks, and also check whether the joystick is connected to the PC in the «Connected State» line (Fig. 10).

In the «Calibration Function» tab, you can center the position of both joysticks (Fig. 10). To do this, you need to set them to the middle position, then click «Default» and «Set». After calibration, you must click «Accept» or «OK» on the bottom line of this window to save the changes.

• In the «Vibration Test» tab, you can check the operation of both vibrators together by pressing the «Both force» button; or separately, by pressing the «Left force» and «Right force» buttons. And also by rotating the left joystick in the analog mode of operation or by pressing the 8-way joystick in the digital mode of operation (Fig. 11). To stop the test, press the «Stop» button. Moving the cursor in the row «Vibration strength» we can increase or decrease the force of vibration. To save the settings, click «Apply» or «OK» in the bottom line of this window.

• The «About» tab provides information about the version of the installed driver.

• The device can work in analog and digital modes. The modes are switch by pressing the HOME button, depending on the mode, the operation mode LEDs light up. In digital mode, two axes are available (indicator lights up in pink), and in analog mode all 4 axes (indicator lights up in purple).

• With PS3.

Connect the receiver to an available USB port and turn on the gamepad. The system will automatically establish a connection, and the LED corresponding to the number of the gamepad in the system will light up.

• With Android.

To connect to devices running Android, you need a USB OTG cable (not included). After connecting the gamepad with this cable, the system will automatically establish a connection, while the indicator lights up in purple.

• Connector for charging.

Connect the gamepad to the PC USB port or to the USB charger using the USB to the micro USB cable (included). When charging, the decorative light comes on and the operation mode indicator blinks.

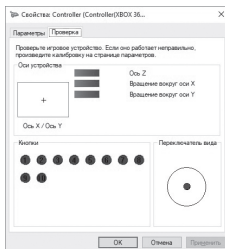


Fig. 9

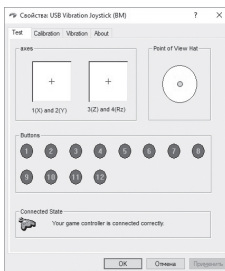


Fig. 10

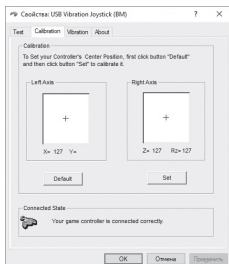


Fig. 11

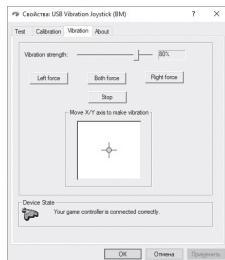


Fig. 12

## 8. TROUBLESHOOTING

Problem	Solution
After installation of the software, the game controller does not work normally.	<p>A. Check whether the link cable of the controller is strongly connected to the PC.</p> <p>B. Open the Properties window: Controller (Controller (XBOX 36 ...)) / Properties: USB Vibration Joystick (BM), and check that the gamepad is connected correctly.</p> <p>C. Press the RESET button to reset the connection.</p> <p>D. Restart your PC, if the controller still doesn't work normally.</p>
The analog axis worked automatically without the intervention of the player.	The manipulator calibration is not adjusted or confirmed after adjustment.
After starting the game, the vibro-feedback function is turned on without the player's intervention.	Enter the «Force Feedback» settings in the game, and calibrate the vibro-feedback function.
In the process of playing the vibration function is not enough.	Enter the «Force Feedback» settings in the game, and set the vibration strength.
The game controller that has been lying without work for a couple of days does not turn on.	Connect it to the power supply for 1-3 minutes. If after that it does not turn on, you need to charge it for a longer time.

If none of the above mentioned solutions removes the problem, please seek professional advice at your nearest authorized service center. Never try to repair the device on your own.

PC Gamepad

**SVEN**<sup>®</sup>



Manufacturer: SVEN PTE. LTD, 176 Joo Chiat Road,  
N° 02-02, Singapore, 427447. Produced under the  
control of Oy Sven Scandinavia Ltd. 15, Kotolah-  
dentie, Kotka, Finland, 48310. Made in China.

® Registered Trademark  
of Oy SVEN  
Scandinavia Ltd. Finland.



V02

**GC-5070**