

SVEN[®]

PC Wired Gamepad

OPERATION MANUAL



GC-2040

www.sven.fi

Congratulations on the purchase of Sven gamepad!

Please read this Operation Manual before using the unit and retain this Operation Manual in safe place for future reference.

COPYRIGHT

© 2018. SVEN PTE. LTD. Version 1.0 (V 1.0).

This Manual and information contained in it are copyrighted. All rights reserved.

TRADEMARKS

All trademarks are the property of their legal holders.

NOTICE OF RESPONSIBILITY RESTRICTION

Despite the exerted efforts to make this Manual more exact, some discrepancies may occur. The information of this Manual is given on "as is" terms. The author and the publisher do not bear any liability to a person or an organization for loss or damages which have arisen from the information, contained in the given Manual.

BUYER RECOMMENDATIONS

- Unpack the device carefully. Make sure there are no accessories left in the box. Check up the device for damage; if the product was damaged during transportation, address the firm which carried out the delivery; if the product functions incorrectly, address the dealer at once.
- Shipping and transportation equipment is permitted only in the original container.
- Does not require special conditions for realization.
- Dispose of in accordance with regulations for the disposal of household and computer equipment.

CONTENTS

1. DESCRIPTION	3
2. SAFETY PRECAUTIONS	3
3. PACKAGE CONTENTS	3
4. SPECIAL FEATURES	3
5. SYSTEM REQUIREMENTS	3
6. DESCRIPTION OF THE CONSTRUCTION	4
7. CONNECTION AND INSTALLATION	4
8. TROUBLESHOOTING	7

Technical support is on www.sven.fi.

1. DESCRIPTION

GC-2040 wireless gamepad can be used in different games such as simulators, arcades, shooter games etc. Vibration feedback imparts a feeling of realistic experience during games. Rubber coating and ergonomic construction of GC-2040 enhance accuracy of its operation during games.

2. SAFETY PRECAUTIONS

- Do not disassemble or repair the device on your own. Maintenance and repairs should be carried out by qualified service centre staff only.
- Protect the device from direct impact of high humidity, dust, strong magnetic fields, vibrations, high temperatures, toxic liquids and gases.
- Instructions for device maintenance: for cleaning the case of the device please use clean soft cloth. Do not use such solvents as gasoline or spirit for cleaning, since these solvents can damage the surface of the device.
- Do not drop the device to avoid damaging it.

3. PACKAGE CONTENTS

- Gamepad — 1 pc
- 2.4GHz USB Nano-Receiver — 1 pc
- Power cable USB to micro USB — 1 pc
- Operation Manual — 1 pc
- Warranty card — 1 pc

4. SPECIAL FEATURES

- Ergonomic design of the gamepad
- Supports: Windows 7/8/10, PS3, Android*
- USB Interface
- Turbo function for continuous firing
- Built-in battery
- 4 axes, D-Pad, 2 mini joysticks and 11 buttons
- Soft-touch coverage for confident control while playing
- Digital and analog modes available

5. SYSTEM REQUIREMENTS

- USB port available
- Windows 7/8/10, PS3, Android* Operational System

* There may be incompatibility with individual versions of Android and models of Android-devices.

6. DESCRIPTION OF CONSTRUCTION

- ① D-Pad
- ② Button SELECT
- ③ Button HOME
- ④ Button START
- ⑤ Buttons 1-4
- ⑥ Left joystick
- ⑦ Operation mode indicators
- ⑧ Right joystick
- ⑨ Button RT
- ⑩ Button RB
- ⑪ Connector for charging
- ⑫ Button LT
- ⑬ Button LB
- ⑭ Button RESET
- ⑮ USB nano-receiver

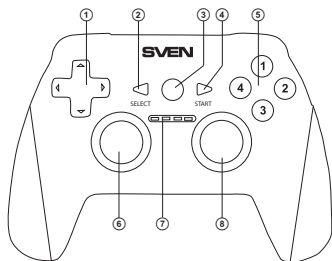


Fig. 1. Top view

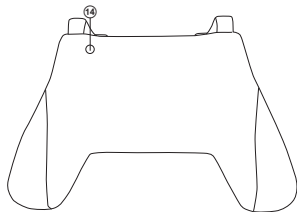


Fig. 3. Bottom view

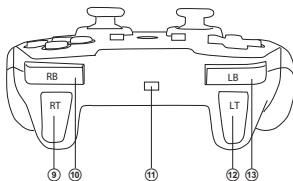


Fig. 2. Rear view



Fig. 4. USB nano-receiver

7. CONNECTION AND INSTALLATION

- Connect the USB receiver ⑮ to an available USB port on the computer.
- Download the software from the official site from the product page and run the program «SVEN Gamepad.exe».
- In order to test and configure the gamepad, choose «Control Panel» → «Devices and Printers», in the Windows control panel (in the «XInput» mode, the gamepad is displayed as «Xbox 360 Controller for Windows», in the «DirectInput» - «PC/PS3/Android»), then right-click on the device icon and select. Gaming device parameters (administrator rights may be required) (Fig.5,6). The «Game devices» window will appear. In XInput mode, the gamepad is displayed as «Controller (XBOX 360 For Windows)» (Fig. 7), in the «DirectInput» mode - «USB Vibration Joystick (BM)» (Fig.8). To switch between the «DirectInput» and «XInput» modes, you must press the HOME button for the 6 seconds.

- To check and configure in «XInput» mode, select «Properties» in the «Game devices» window, the «Properties: Controller (XBOX 36 ...» window will pop-up (Fig.9). In the «Verification» tab, you can check the execution of commands when you press the buttons and rotate the joystick. To calibrate the joystick, select the «Settings» tab, click «Calibrate» and follow the instructions.

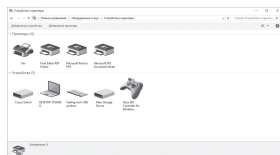


Fig. 5



Fig. 6

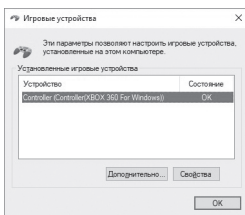


Fig. 7

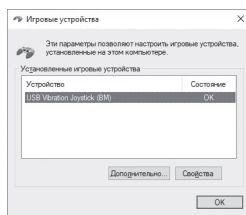


Fig. 8

• To check and configure in DirectInput mode, select Properties in the Game Devices window, and the Properties: USB Vibration Joystick (BM) window pops up. In the «Test» tab, you can check the execution of commands when you press the buttons and rotate the joysticks, and also check whether the joystick is connected to the PC in the «Connected State» line (Fig.10).

In the «Calibration» tab, you can center the position of both joysticks (Fig. 10). To do this, you need to set them to the middle position, then click «Default» and «Set». After calibration, you must click «Accept» or «OK» on the bottom line of this window to save the changes.

• In the «Vibration Test» tab, you can check the operation of both vibrators together by pressing the «Both force» button; or separately, by pressing the «Left force» and «Right force» buttons. And also by rotating the left joystick in the analog mode of operation or by pressing the 8-way joystick in the digital mode of operation (Fig. 11). To stop the test, press the «Stop» button. Moving the cursor in the row «Vibration strength» we can increase or decrease the force of vibration. To save the settings, click «Apply» or «OK» in the bottom line of this window.

• The «About» tab provides information about the version of the installed driver.

• The device can work in analog and digital modes. The modes are switch by pressing the HOME button.

• With PS3.

Connect the gamepad to an available USB port. The system will automatically establish a connection, and the LED corresponding to the number of the gamepad in the system will light up.

• With Android.

To connect to devices running Android, you need a USB OTG cable (not included). After connecting the gamepad with this cable, the system will automatically establish a connection, while the first LED will light up.

• Connector for charging.

To switch between the «DirectInput» and «XInput» modes, you must press the HOME button for 6 seconds. In the «DirectInput» mode, the second left LED lights up, and in the «XInput» mode - the 3rd LED.

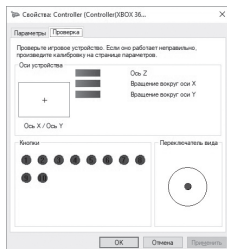


Fig. 9

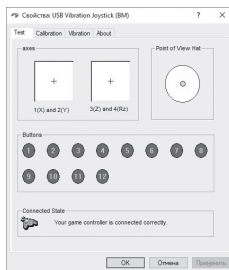


Fig. 10

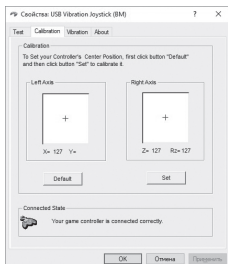


Fig. 11

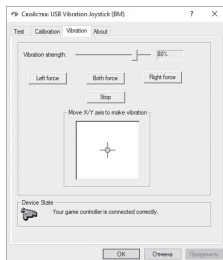


Fig. 12

8. TROUBLESHOOTING

Problem	Solution
After installation of the software, the game controller does not work normally.	<p>A. Check whether the link cable of the controller is strongly connected to the PC.</p> <p>B. Open the Properties window: Controller (Controller (XBOX 36 ...)) / Properties: USB Vibration Joystick (BM), and check that the gamepad is connected correctly.</p> <p>C. Press the RESET button to reset the connection.</p> <p>D. Restart your PC, if the controller still doesn't work normally.</p>
The analog axis worked automatically without the intervention of the player.	The manipulator calibration is not adjusted or confirmed after adjustment.
After starting the game, the vibro-feedback function is turned on without the player's intervention.	Enter the «Force Feedback» settings in the game, and calibrate the vibro-feedback function.
In the process of playing the vibration function is not enough.	Enter the «Force Feedback» settings in the game, and set the vibration strength.

If none of the above mentioned solutions removes the problem, please seek professional advice at your nearest authorized service center. Never try to repair the device on your own.

PC Gamepad

SVEN[®]



Manufacturer: SVEN PTE. LTD, 176 Joo Chiat Road,
N° 02-02, Singapore, 427447. Produced under the
control of Oy Sven Scandinavia Ltd. 15, Kotolah-
dentie, Kotka, Finland, 48310. Made in China.

® Registered Trademark
of Oy SVEN
Scandinavia Ltd. Finland.



V02

GC-2040